

# AN60/100



## TECHNICAL DATA SHEETS

## Specification

|                     |   |
|---------------------|---|
| Design              | Stable, torsion-free frame design made from extruded aluminum profiles<br>Integrated, circumferential sliding levels<br>Optimum fixing levels via component mounting grid<br>Stabilized doors with double bend and door reinforcement profile |
| Protection level    | IP 40 according to EN 62208<br>IP 54 according to EN 62208<br>IK 9 according to EN 62208<br>Earthquake-tested according to ETS EN 300-019-2-4<br>BABS shock test 3 bar  |
| Surface finish      | Textured powder coating   |
| Certification       | EN 62208, approved for the professional mounting of<br>switchgear assemblies in accordance with EN 61439-1<br>RoHS / REACH / WEEE-compliant   |
| Dimensions          | Width from 200 mm in 1-mm steps<br>Height from 1000 mm in 1-mm steps<br>Depth from 200 mm in 1-mm steps<br>Manufactured to customer requirements  |
| Installation weight | 200 kg  |

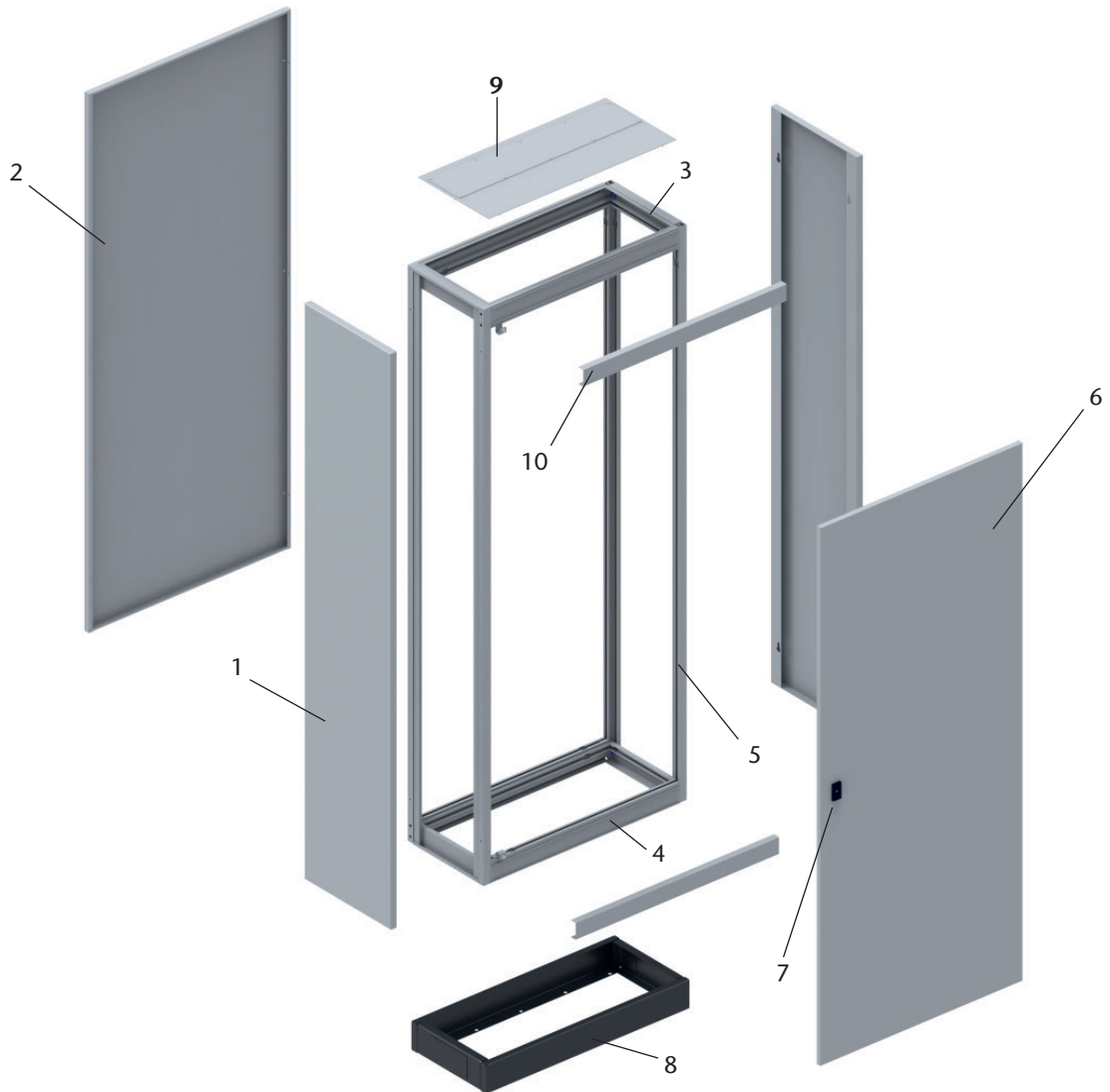
## Standard design

- 1-leaf or 2-leaf doors with 112° opening angle
- Locking with 3-point bar lock
- Open at the bottom, top cable entry with aluminum cover
- Doors and side walls painted on both sides, rear wall untreated
- Standard color RAL 7035
- Row arrangements easy to configure across multiple enclosures
- Doors, rear wall, roof and side walls easy to assemble and disassemble
- 60-mm aluminum panels

## Optional design

- Various locking mechanisms, actuators and lock cylinders
- Doors with 180° opening angle
- 100-mm aluminum panels
- Pockets for diagrams and charts
- Mounting plates and partitions
- Fixed, pull-out and folding trays
- Extensions with profiles and channels
- Baseplate
- Various cutouts to customer specification
- Various cable inlets: Plastic covers, cable inlet plates, vapor barriers, foam rubber etc.
- Inspection windows
- Steel plinth 100 mm
- Aluminum plinth with heights 50 / 80 / 100 / 200 mm
- Hollow base plinth
- ETSI or 19" technology, fixed installation or hinged frame
- Prepared for transport eyebolts
- Prepared for external wall fixing
- Choice of RAL
- Electrical accessories: Door contact switch, lighting, various heat dissipation modules, heaters,
- For more information see the accessories catalog



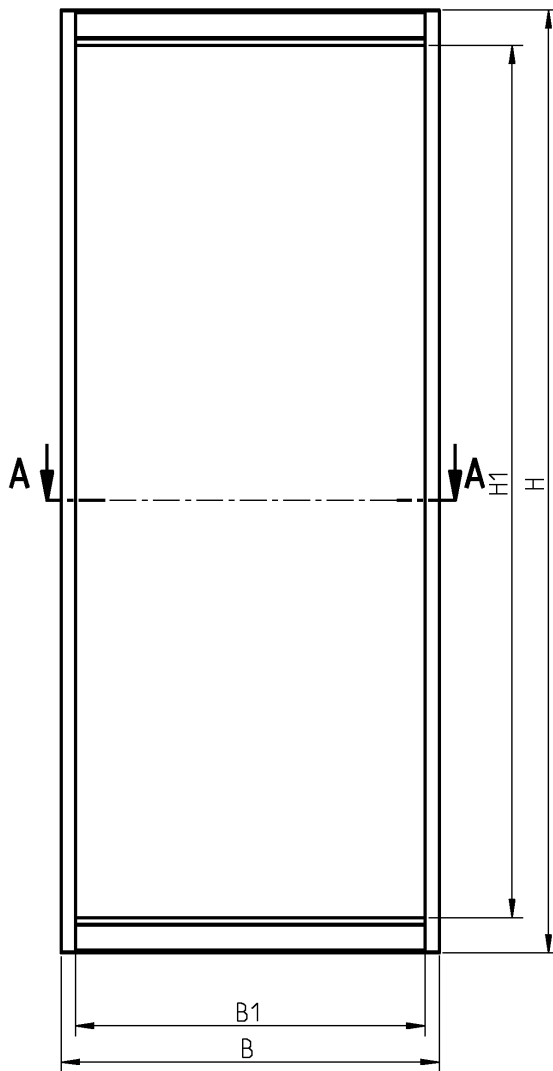


## Description

|   |               |    |        |
|---|---------------|----|--------|
| 1 | Side wall     | 6  | Door   |
| 2 | Rear wall     | 7  | Lock   |
| 3 | Depth profile | 8  | Plinth |
| 4 | Width profile | 9  | Roof   |
| 5 | Corner post   | 10 | Panels |

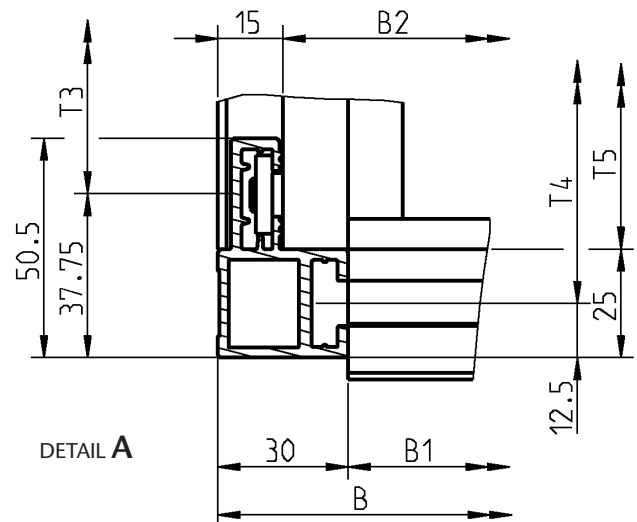
# Assembly dimensions for integration of fixing rails

Front view

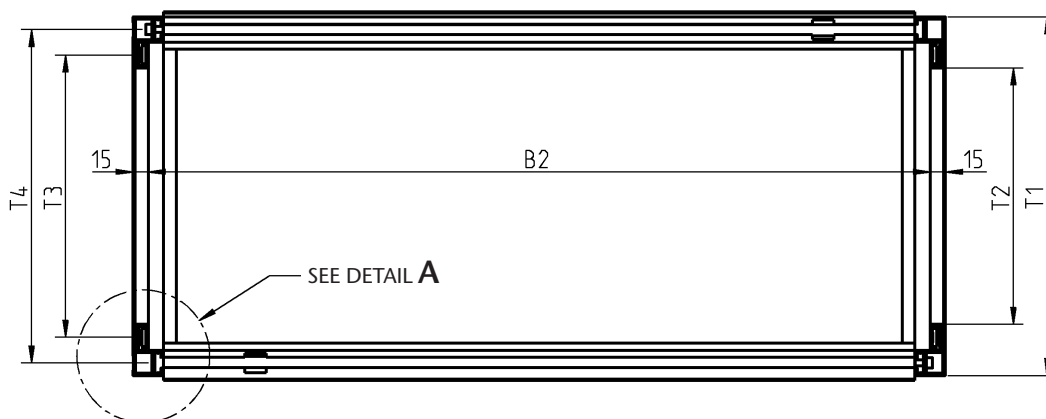


B Enclosure width  
 H Enclosure height  
 T Enclosure depth

B1 B-60 = Clear width  
 B2 B-30 = Max. installation width  
 H1 H-133.5 = Clear height  
 T1 T-46 = Frame dimension without door and rear wall  
 T2 T-147 = Clear depth  
 T3 T-121.5 = Assembly dimension for integration of fixing rails  
 T4 T-71 = Assembly dimension for integration of fixing rails  
 T5 T-96 = Installation dimensions for fixing rails



Top view

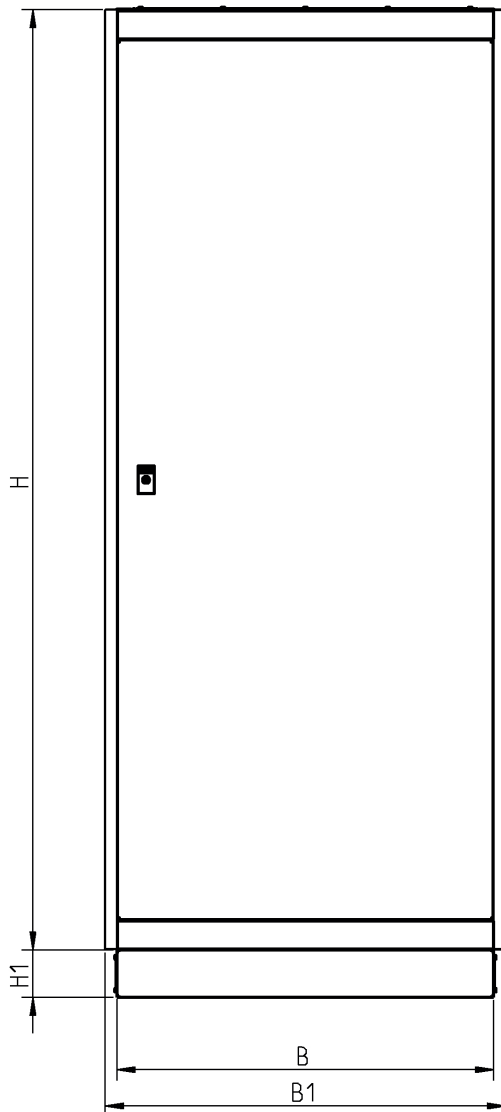


SECTION A-A

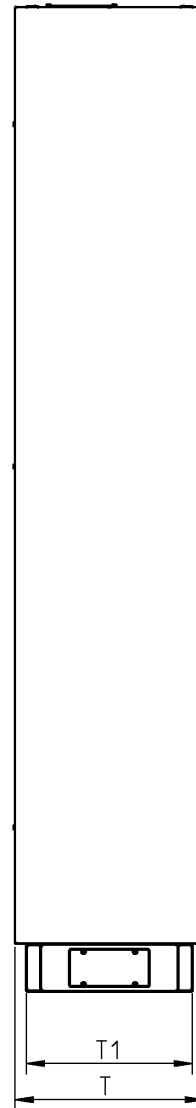
# External dimensions

5

Front view



Side view from left

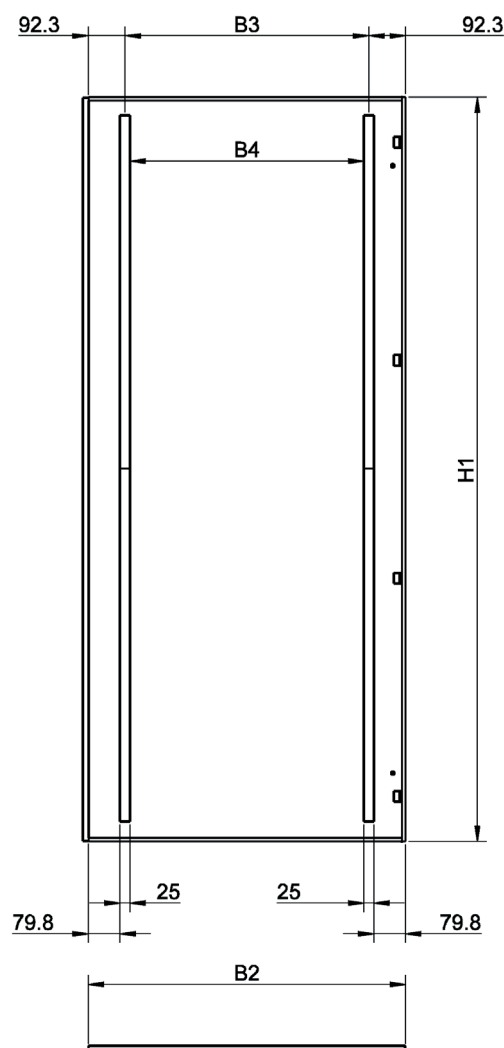
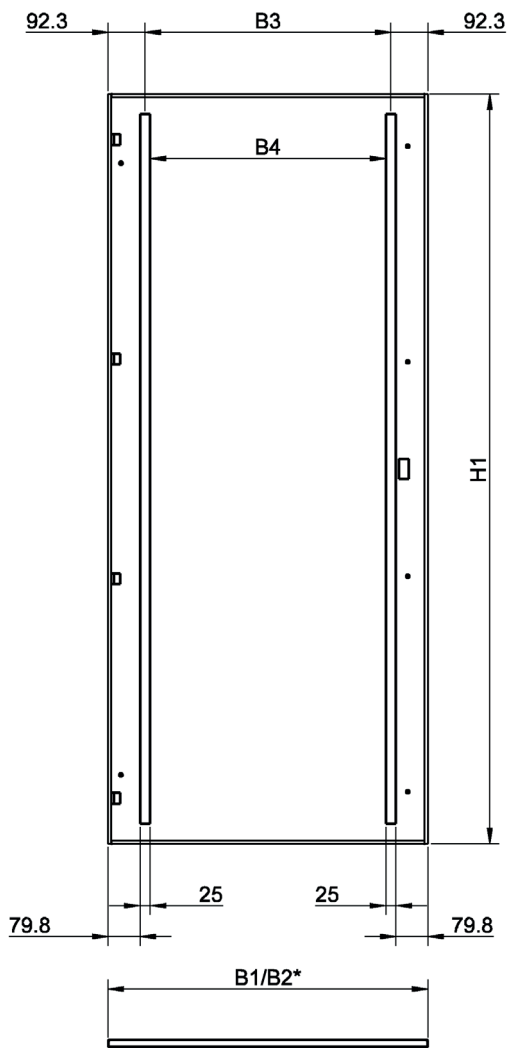


- B Enclosure width = Plinth width
- H Enclosure height
- T Enclosure depth
  
- B1  $B+50$  = Width with side walls
- H1 Plinth height
- T1 Plinth depth -46

# Door 1-leaf / 2-leaf

View from the inside, door with lock

View from the inside, door without lock



B Enclosure width  
H Enclosure height

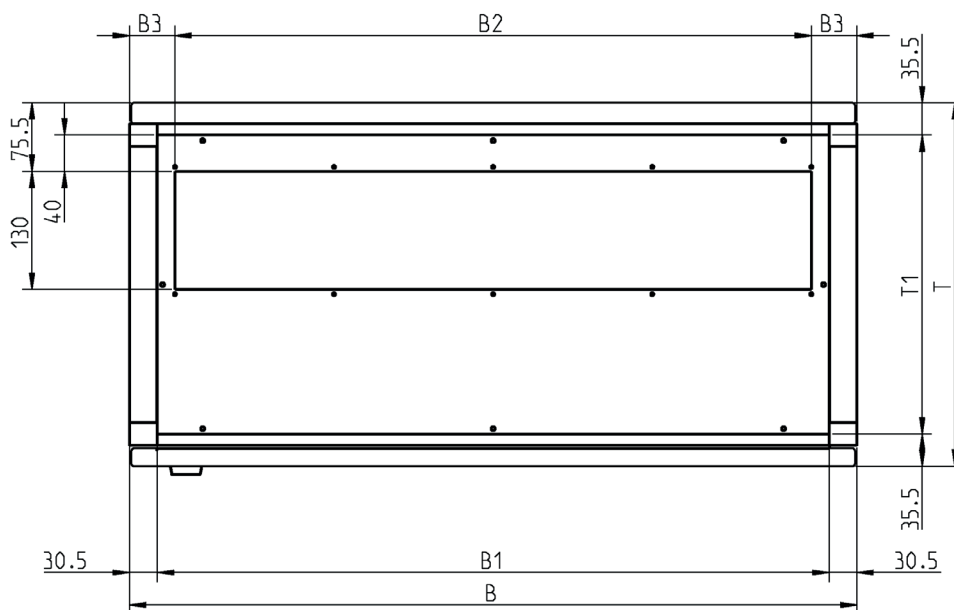
B1 B-4 = Width 1-leaf door  
B2 (B/2)-4 = Width 2-leaf door  
B3 B-188.6 = Distance between centers of reinforcement profiles  
B4 B-213.6 = Distance between reinforcement profiles

H1 H-132 = Height of door

Note: Doors of 1100, 1300 and 1500-wide stock panels are asymmetrical

# Roof, enclosure width 400-1000 mm

Top view



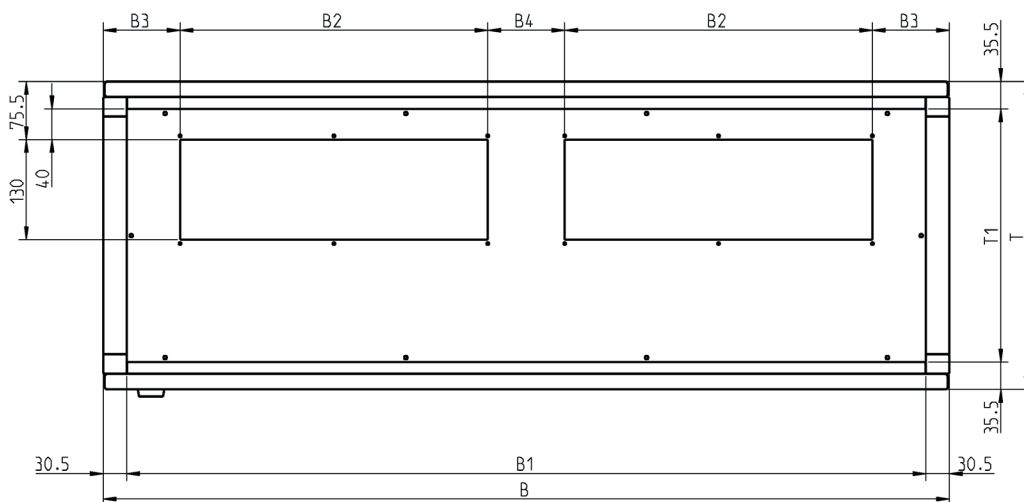
- B Enclosure width
- T Enclosure depth
  
- B1 B-61 = Width of roof
- B2 Width of cutout
- B3 Distance to cutout
  
- T1 T-71 = Depth of roof

| B    | B1  | B2  | B3  |
|------|-----|-----|-----|
| 400  | 339 | 300 | 50  |
| 500  | 439 | 400 | 50  |
| 600  | 539 | 500 | 50  |
| 700  | 639 | 600 | 50  |
| 800  | 739 | 700 | 50  |
| 900  | 839 | 800 | 50  |
| 1000 | 939 | 800 | 100 |

| T   | T1  |
|-----|-----|
| 300 | 229 |
| 400 | 329 |
| 500 | 429 |
| 600 | 529 |

# Roof, enclosure width 1100-1700 mm

Top view



- B Enclosure width
- T Enclosure depth
  
- B1 B-61 = Width of roof
- B2 Width of cutout
- B3 Distance to cutout
- B4 Distance between cutouts
  
- T1 T-71 = Depth of roof

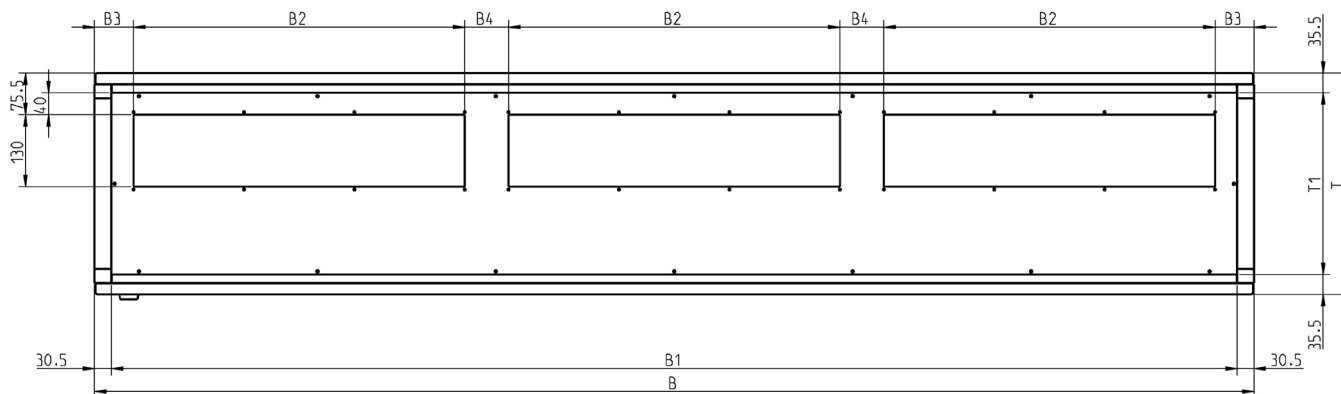
| B    | B1   | B2  | B3   | B4  |
|------|------|-----|------|-----|
| 1100 | 1039 | 400 | 100  | 100 |
| 1200 | 1139 | 500 | 70.5 | 59  |
| 1300 | 1239 | 500 | 100  | 100 |
| 1400 | 1339 | 600 | 70.5 | 59  |
| 1500 | 1439 | 600 | 100  | 100 |
| 1600 | 1539 | 700 | 70.5 | 59  |
| 1700 | 1639 | 700 | 100  | 100 |

| T   | T1  |
|-----|-----|
| 300 | 229 |
| 400 | 329 |
| 500 | 429 |
| 600 | 529 |



# Roof, enclosure width 2000-2200 mm

Top view



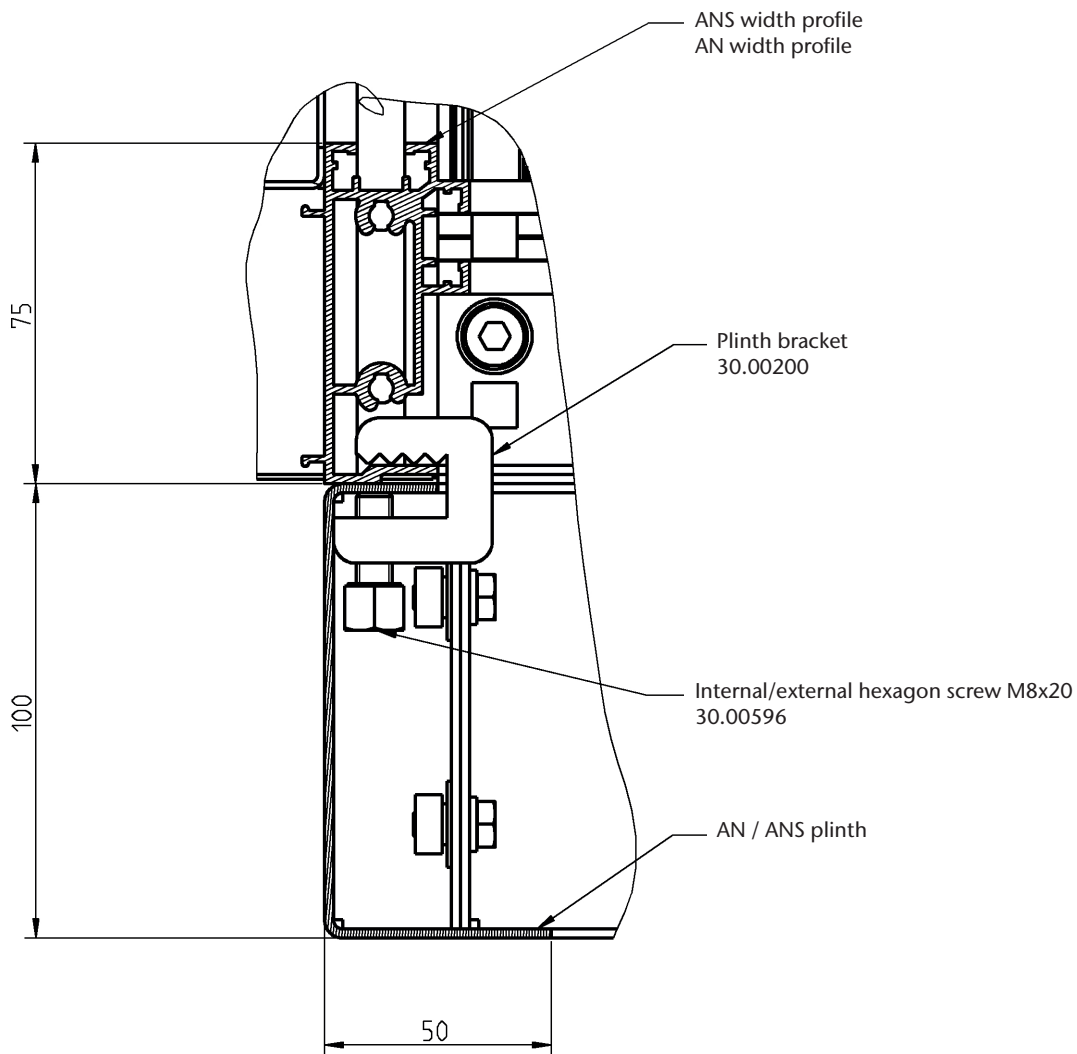
- B Enclosure width
- T Enclosure depth
- B1 B-61 = Width of roof
- B2 Width of cutout
- B3 Distance to cutout
- B4 Distance between cutouts

| B    | B1   | B2  | B3    | B4   |
|------|------|-----|-------|------|
| 2000 | 1939 | 600 | 70.5  | 29.5 |
| 2100 | 2039 | 600 | 90.5  | 59.5 |
| 2200 | 2139 | 600 | 110.5 | 89.5 |

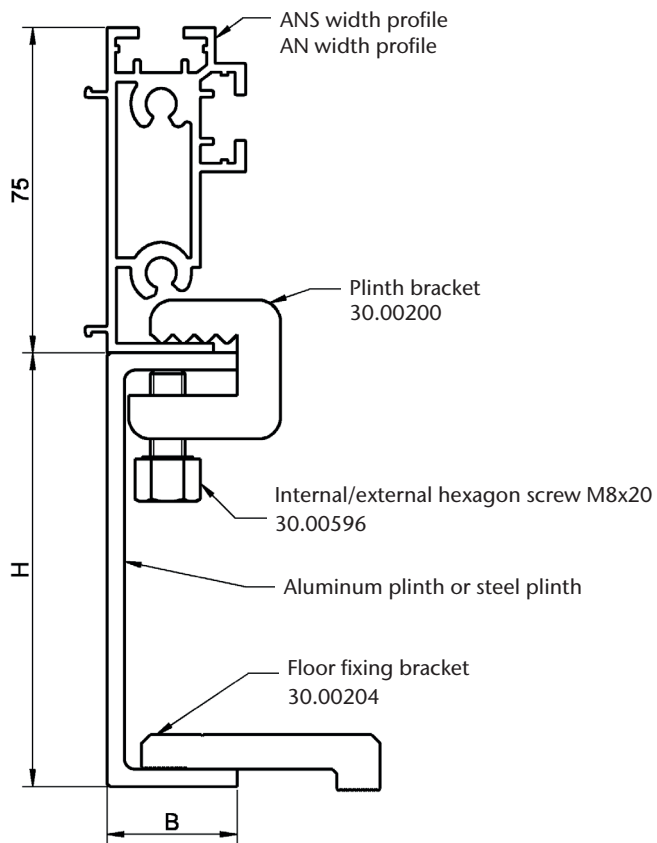
- T1 T-71 = Depth of roof

| T   | T1  |
|-----|-----|
| 300 | 229 |
| 400 | 329 |
| 500 | 429 |
| 600 | 529 |

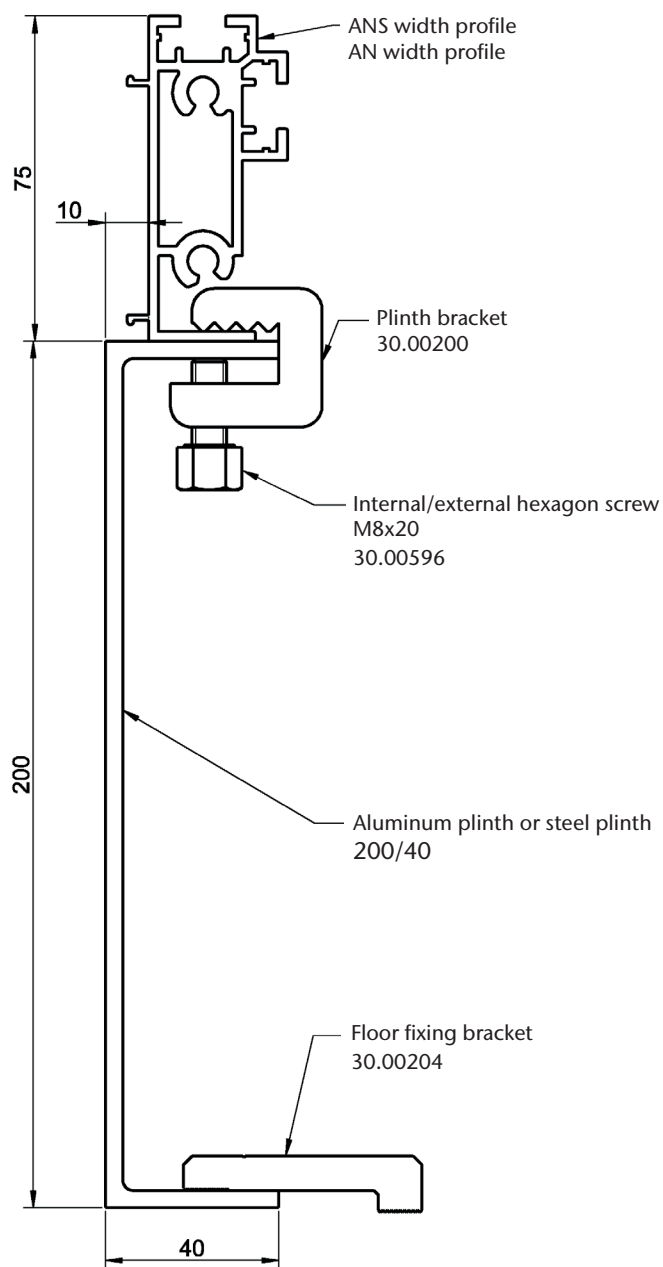
## Steel plinth



## Aluminum plinth



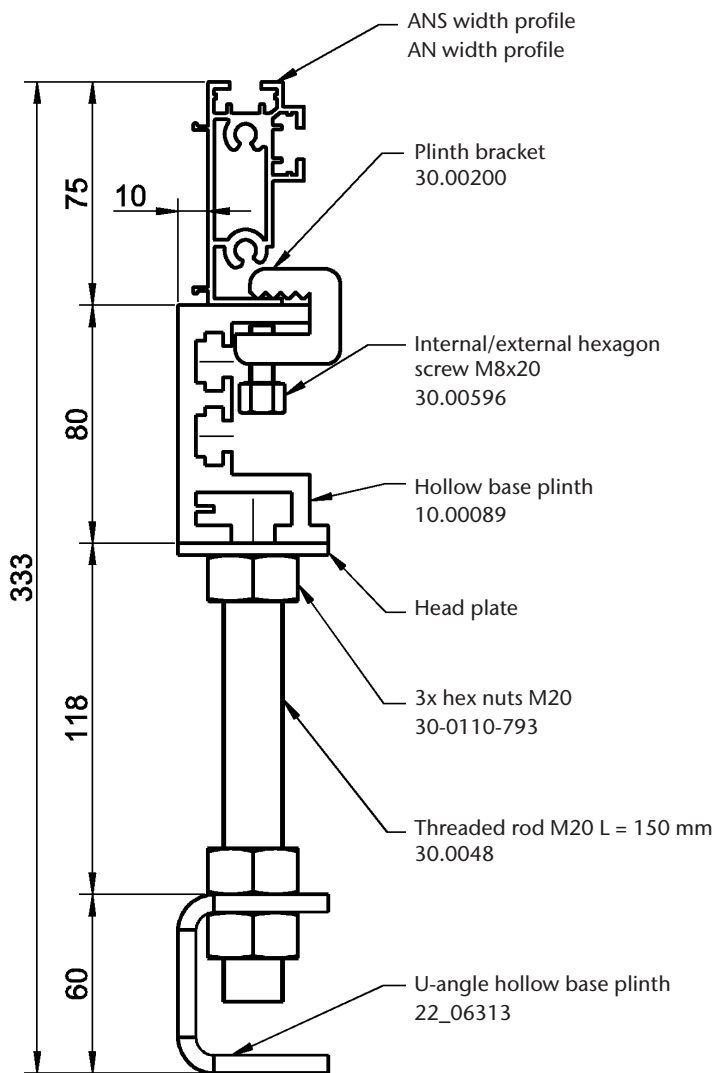
## Aluminum plinth 200 mm



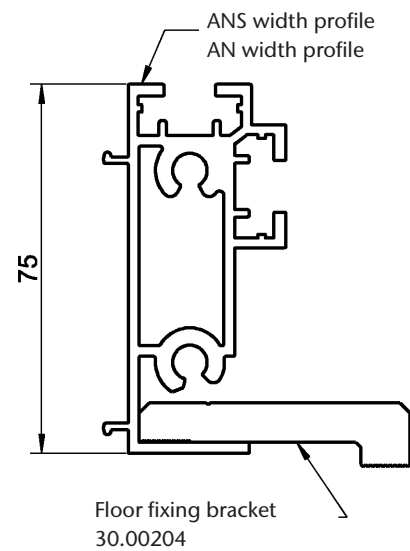
| Plinth types |    |  |
|--------------|----|--|
| H            | B  | Installation dimensions,<br>plinth depth   |
| 50           | 30 | Enclosure depth -46<br>Enclosure width -46 |
| 80           | 30 |  |
| 100          | 30 |  |
| 200          | 40 | Enclosure depth -26<br>Enclosure width -46 |

H = Plinth height  
B = Leg depth

## Hollow base plinth



## Without plinth



Installation dimensions, hollow base plinth depth  
Enclosure depth -26, Enclosure width -46

[www.almatec.com](http://www.almatec.com)

Almatec AG  
Industriestrasse 12,  
6170 Schüpfheim, Switzerland  
Phone +41 41 485 77-77, Fax -88  
info@almatec.com

Almatec SA  
Ruelle de la Mottaz 7,  
1071 Chexbres, Switzerland  
Phone +41 21 946 03-00, Fax -03  
info@almatec.com

Almatec GmbH  
Im Löchel 2,  
35423 Lich-Eberstadt, Germany  
Phone +49 6004 808-0, Fax -149  
service@almatec.com



**ALMATEC**  
KNILL GRUPPE

  
KNILL GRUPPE