

ANK DOUBLE-WALLED ENCLOSURES



TECHNICAL DATA SHEETS

Specification

Design	Stable, torsion-free profile technology Double-walled version made from hollow aluminium profiles Passive heat dissipation through natural convection Integrated, circumferential sliding levels
Protection level	IP 55 according to EN 60529 IK 10 according to EN 62208 Shock, transport and vibration according to ETS EN 300-01 Earthquake-tested according to ETS EN 300-019-2-4
Surface	Textured powder coating
Certifications	EN 62208, approved for the professional mounting of switchgear assemblies as per EN 61439-1 RoHS- / REACH- / WEEE-compliant
Dimensions	Width as of 250 mm in 25-mm increments Height as of 250 mm in 1-mm increments Depth as of 250 mm in 25-mm increments Manufactured to customer requirements

Standard finish

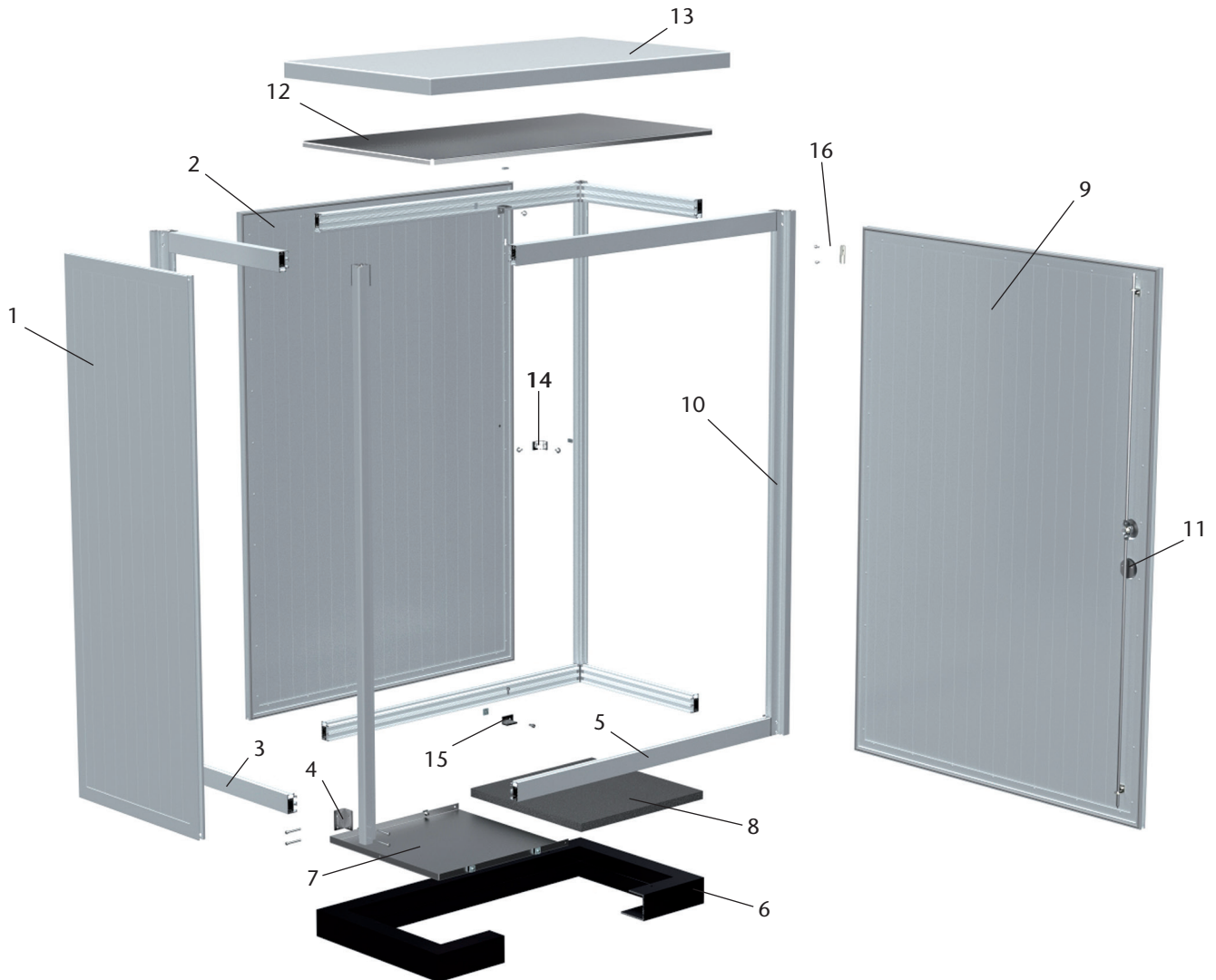
- 1-leaf or 2-leaf doors with semi-concealed hinges and 180° opening angle
- Closure with 3-point mandrel bar lock and lever handle, prepared for lock cylinders as of 1500 mm
- Double-walled roof design
- Sealed at ground level by vapour barrier or baseplate
- Standard colours RAL 7032 and 7035
- All dimensions can be combined into rows or extended

Optional variant

- Various locking mechanisms, actuators and lock cylinders
- Door stay
- Vapour barrier
- Front sections can be inserted or screwed on from the front, side or rear as required
- Pockets for diagrams and charts
- Assembly plates and partitions
- Various heat dissipation modules and heaters
- Fixed, pull-out and folding trays
- Extensions with profiles and ducts
- Baseplates, if necessary with cut-outs and a range of cover variants
- Lockable openings for cable feedthroughs
- Inspection window and door-in-door
- Aluminium plinth in the heights 50 / 80 / 100 / 200 mm
- ETSI or 19" technology, fixed installation or hinged frame
- Transport eyebolts
- EMC protection against electromagnetic fields
- Chromium steel pilot shaft system
- Special plinth, base frame, ground plinth and shaft systems
- Protective anti-graffiti paint
- Choice of RAL
- Electrical accessories: Door contact switch, lighting, various heat dissipation modules, heaters; for more information see the accessories catalogue

Technical specifications

3



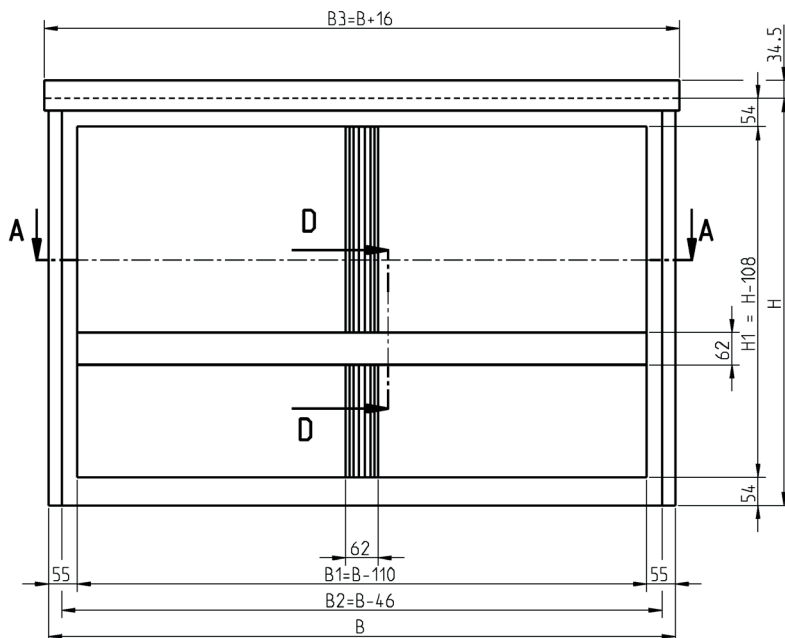
Description

1	Side wall	9	Door
2	Rear wall	10	Corner post
3	Depth profile	11	Mandrel bar lock with lever handle
4	Corner support	12	Sub-roof
5	Width profile	13	Outer roof
6	Plinth	14	Wall brackets
7	Baseplate	15	Floor / plinth fixing
8	Mat-type vapour barrier	16	Hinges

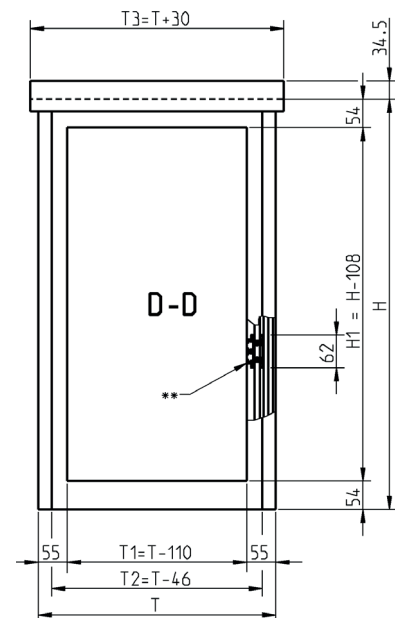
Normal version, assembly dimensions for integration of fixing rails

4

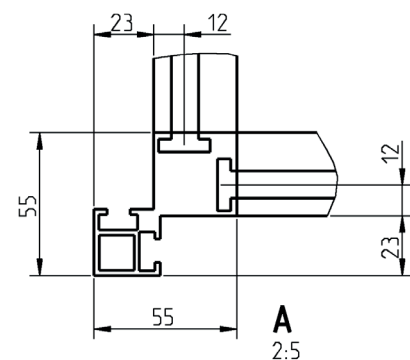
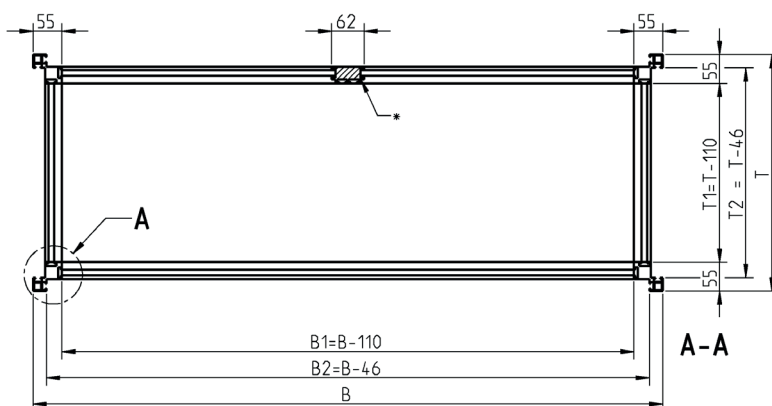
Front view



Side view from left



Top view



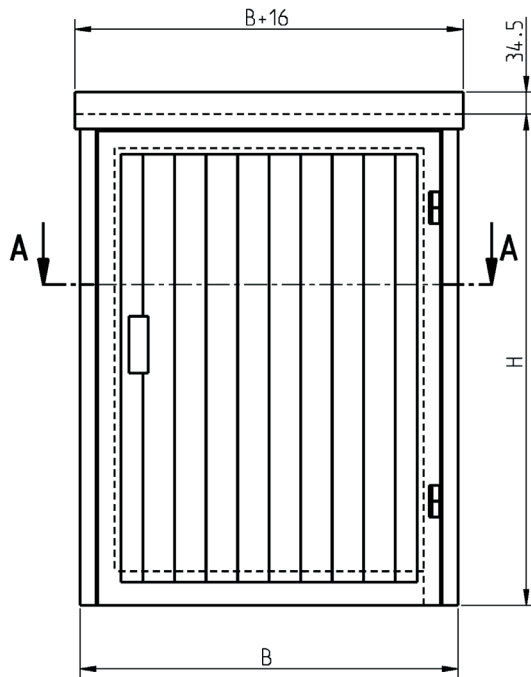
B Width between uprights
 H Height of uprights
 T Depth between uprights
 B1 Clear width
 B2 max. installation width
 B3 Roof width

H1 Clear height
 T1 Clear depth
 T2 max. installation depth
 T3 Roof depth
 * Centre strut from $B > 1600$
 ** Centre strut for front partition

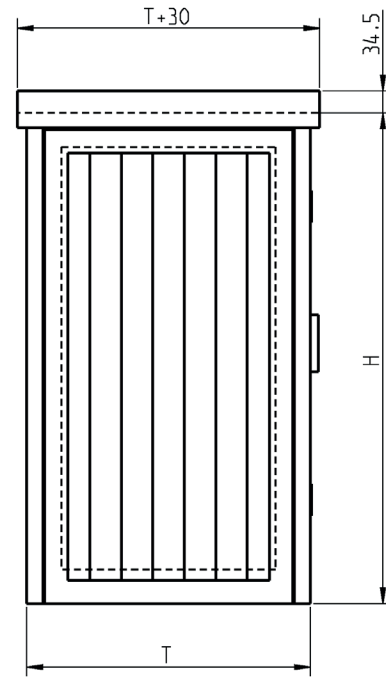
Normal version, 1-leaf, without plinth

5

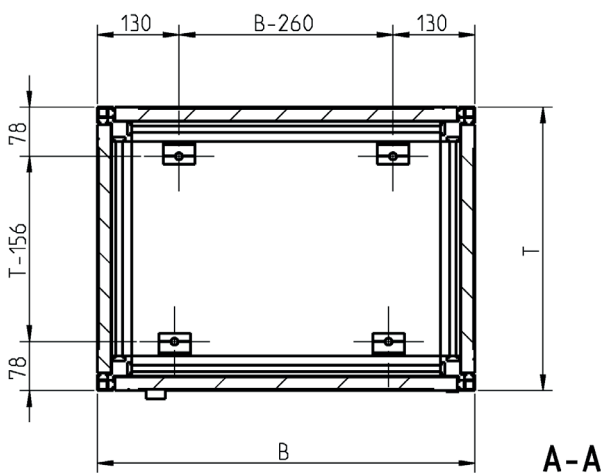
Front view



Side view from left

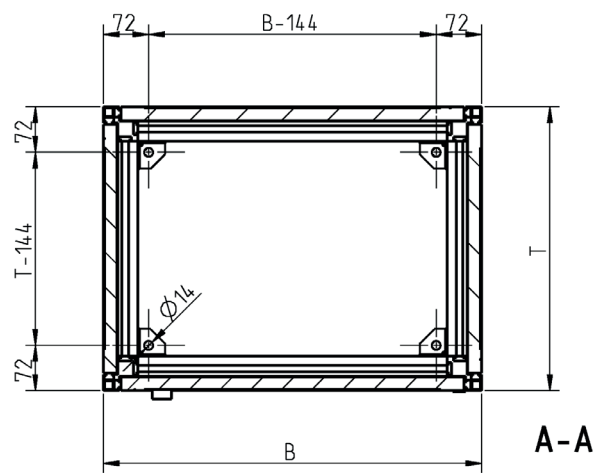


Top view



Floor fixing with aluminium brackets (standard)

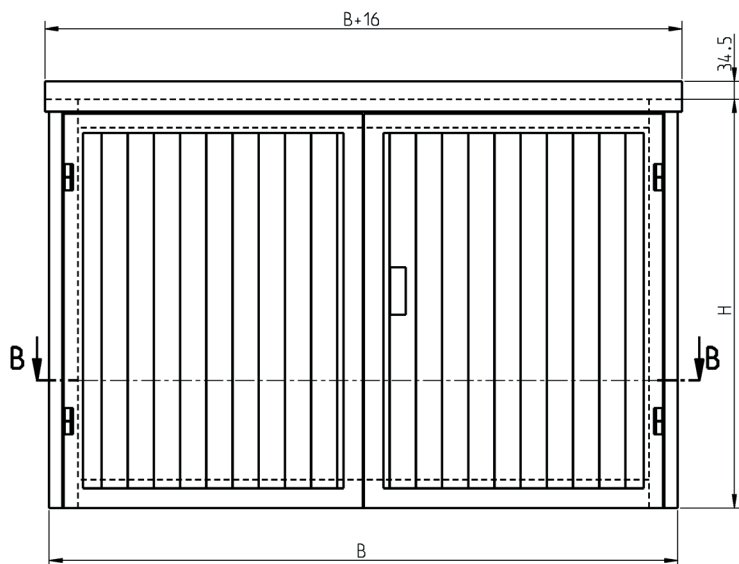
Top view



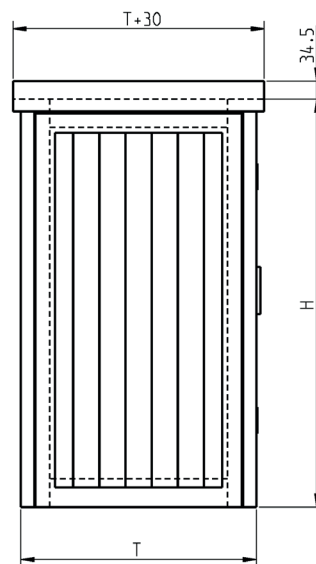
Floor fixing with CrNi brackets

Normal version, 2-leaf, without plinth

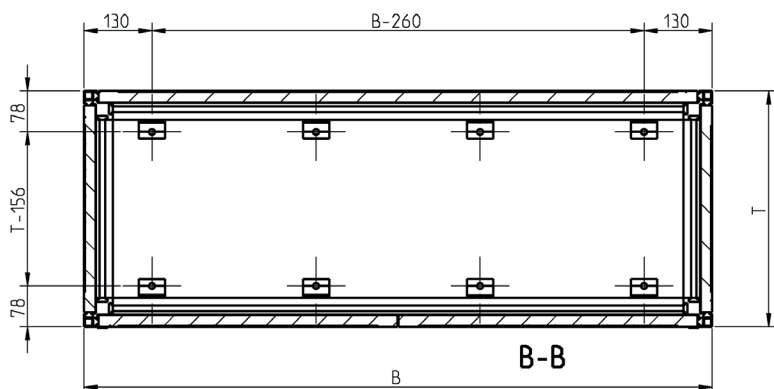
Front view



Side view from left



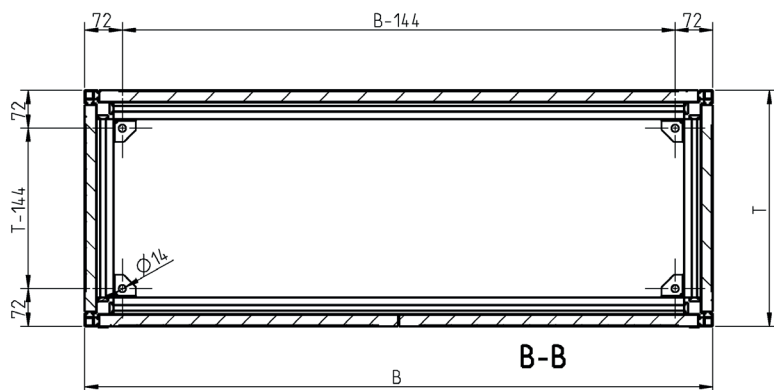
Top view



Number of floor fixing brackets:

- B < 1000 4 units
- B ≥ 1000 6 units
- B ≥ 1600 8 units
- B > 2000 10 units

Top view

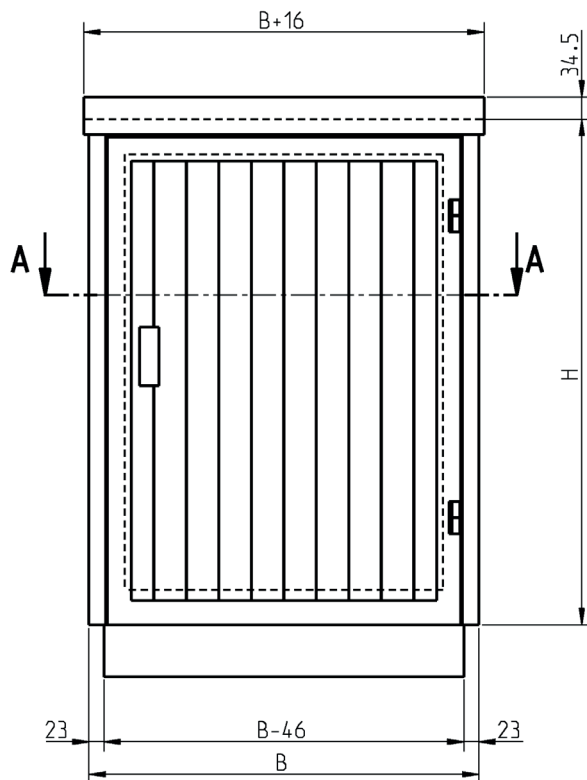


4 units CrNi brackets

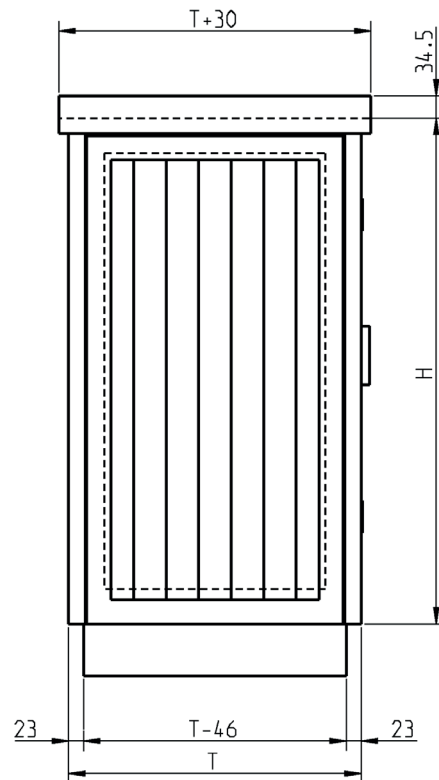
Normal version, 1-leaf, with plinth

7

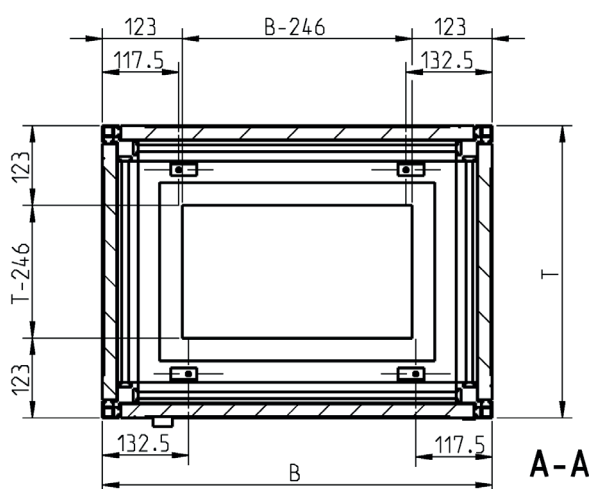
Front view



Side view from left

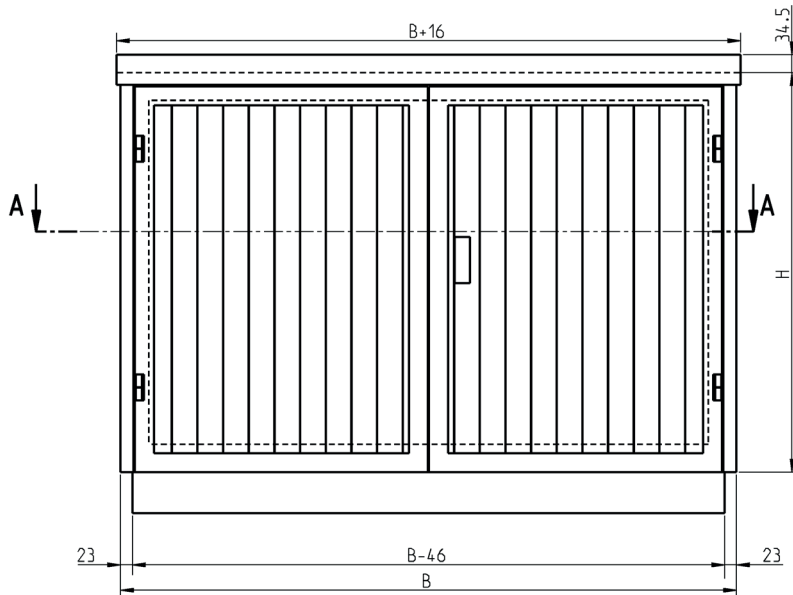


Top view

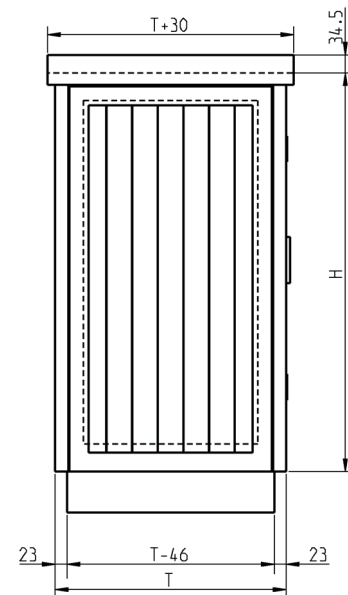


Normal version, 2-leaf, with plinth

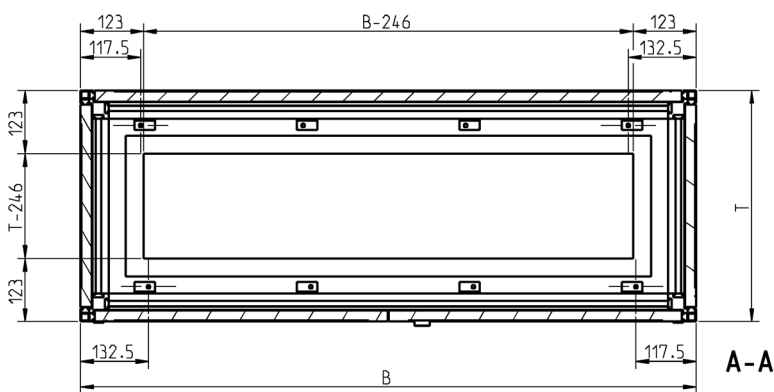
Front view



Side view from left



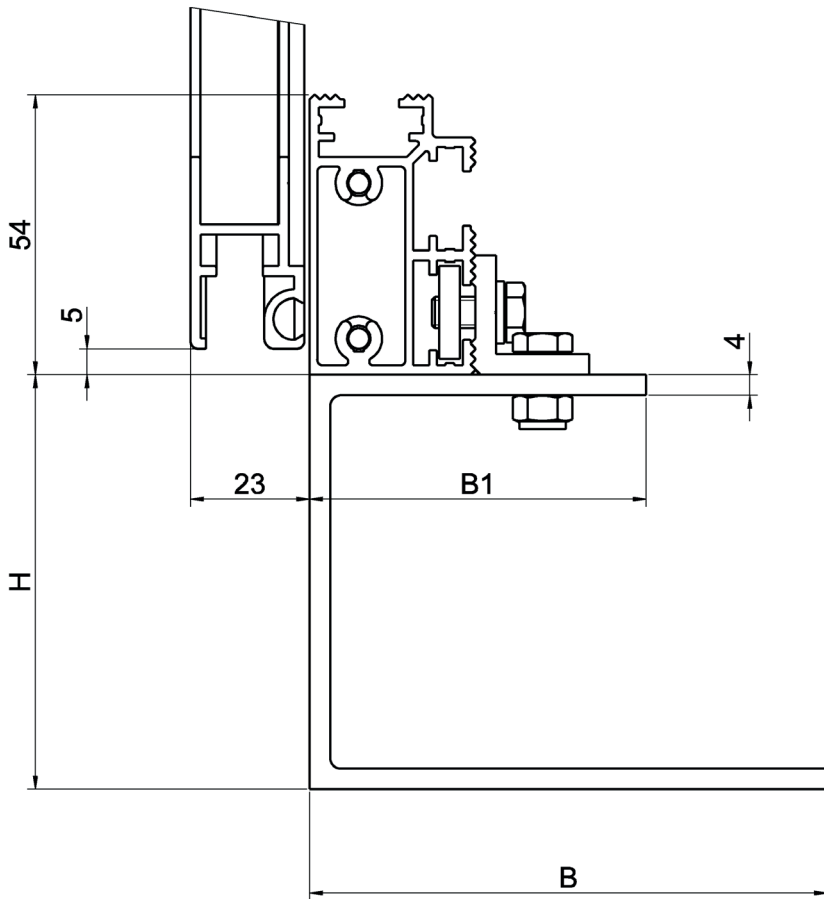
Top view



Number of floor fixing brackets:

B <	1000	4 units
B ≥	1000	6 units
B ≥	1600	8 units
B >	2000	10 units

Plinth fixing

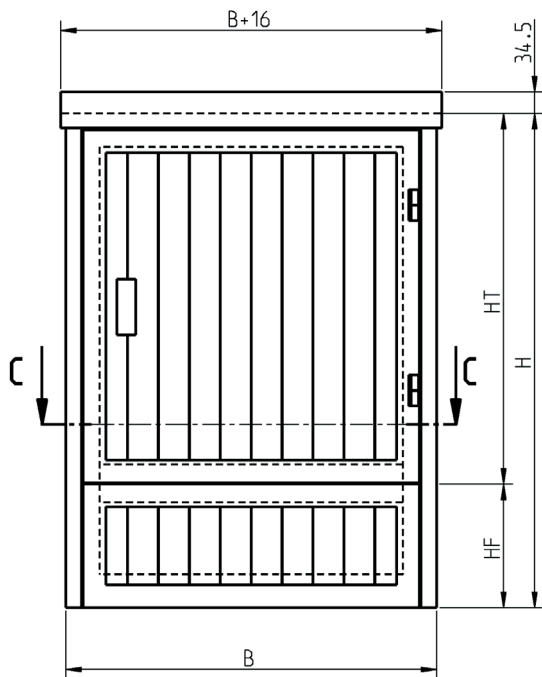


Plinth types			
H	B1	B	Variable dimensions
80	65	100	Standard from T = 350
80	50	50	
100	50	50	
200	40	40	

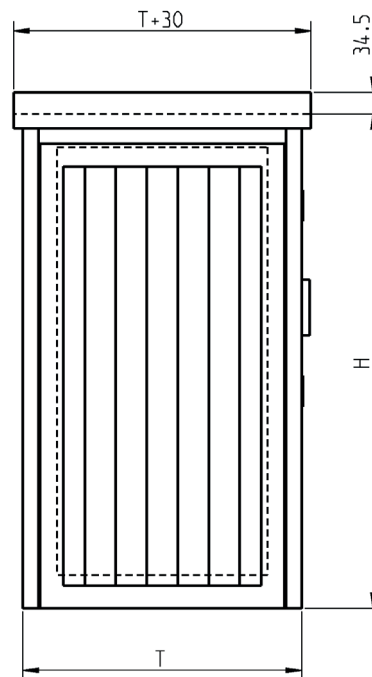
Normal version, 1-leaf, with front section

10

Front view

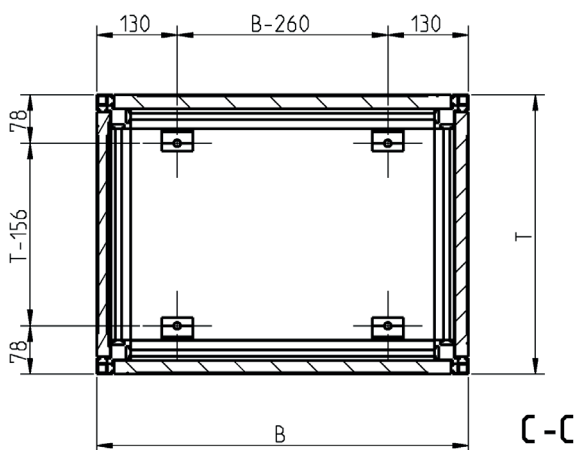


Side view from left



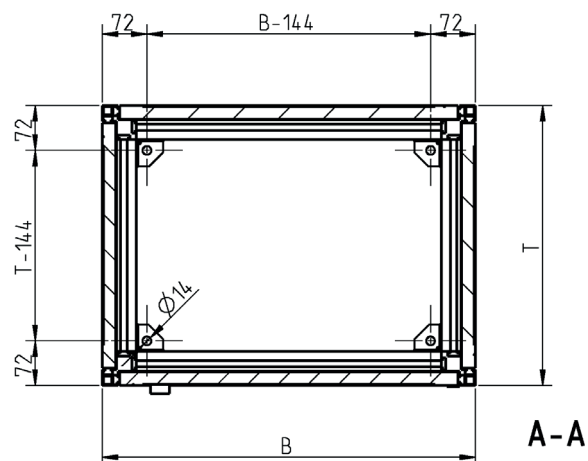
HF = Height of front section
HT = Height of door

Top view



Floor fixing with aluminium brackets (standard)

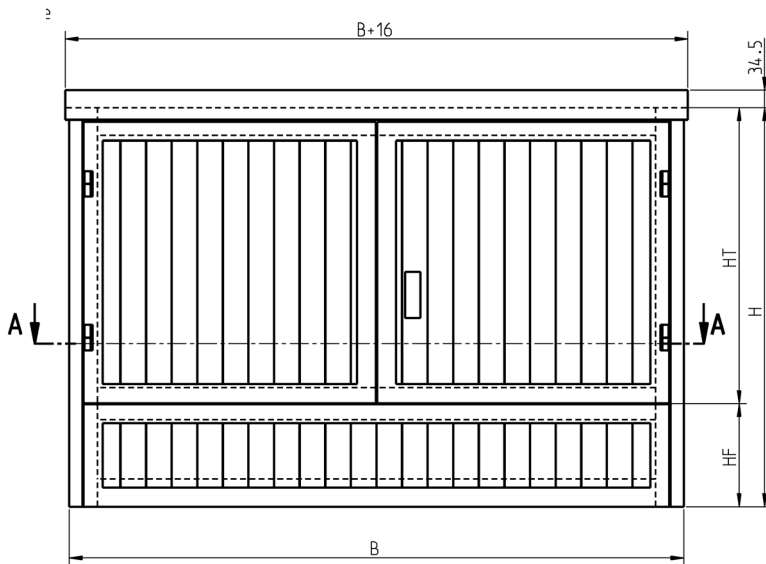
Top view



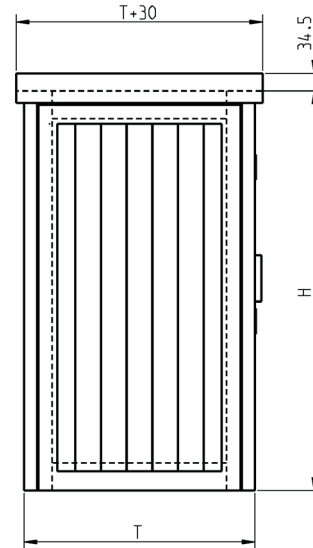
Floor fixing with CrNi brackets

Normal version, 2-leaf, with front section

Front view

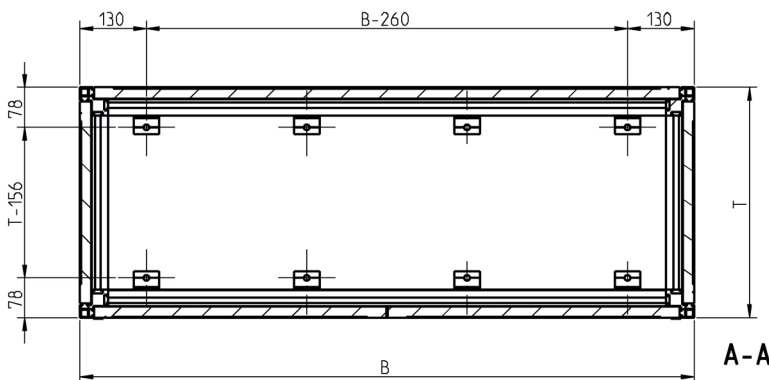


Side view from left



HF = Height of front section
HT = Height of door

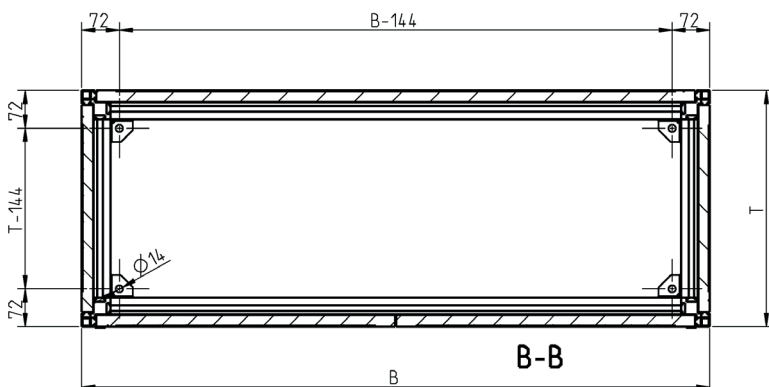
Top view



Number of floor fixing brackets:

B < 1000	4 units
B > = 1000	6 units
B > = 1600	8 units
B > 2000	10 units

Top view

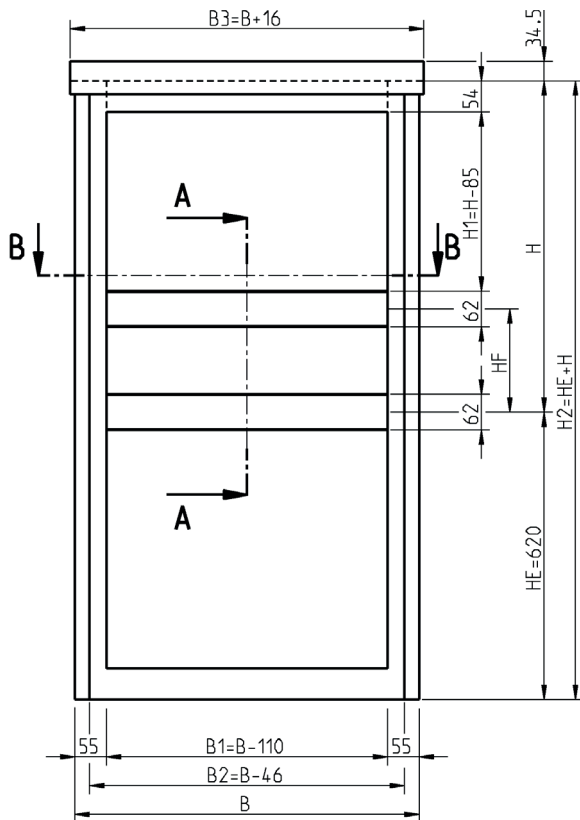


4 units CrNi brackets

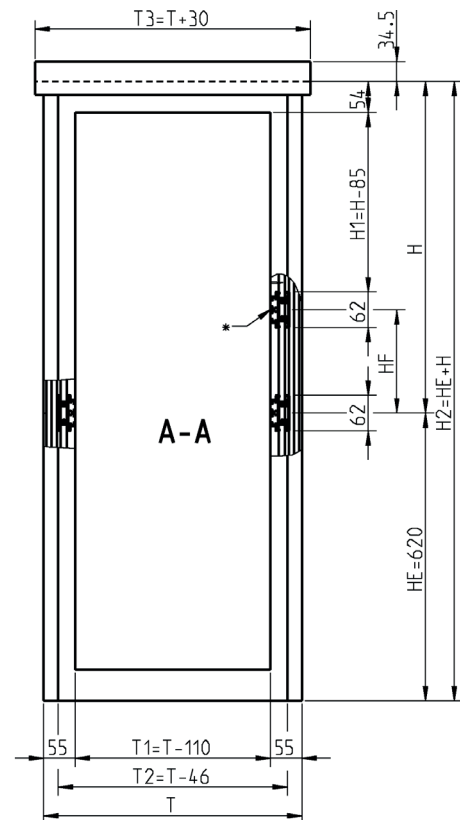
Ground enclosure, assembly dimensions for integration of fixing rails

12

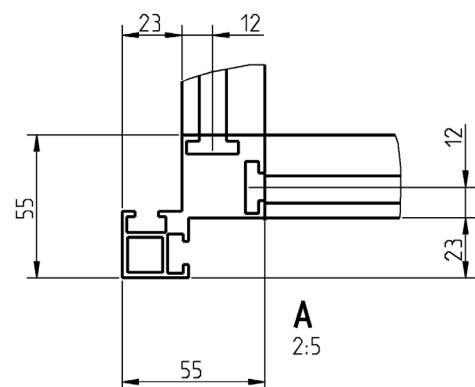
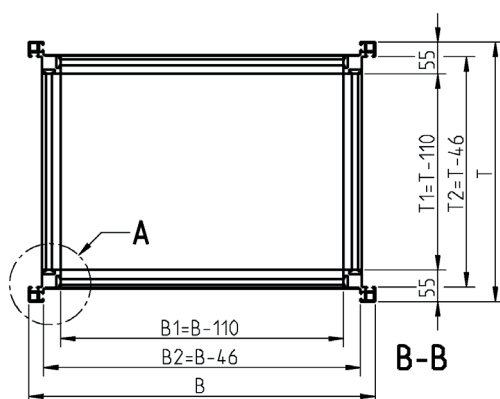
Front view



Side view from left



Top view



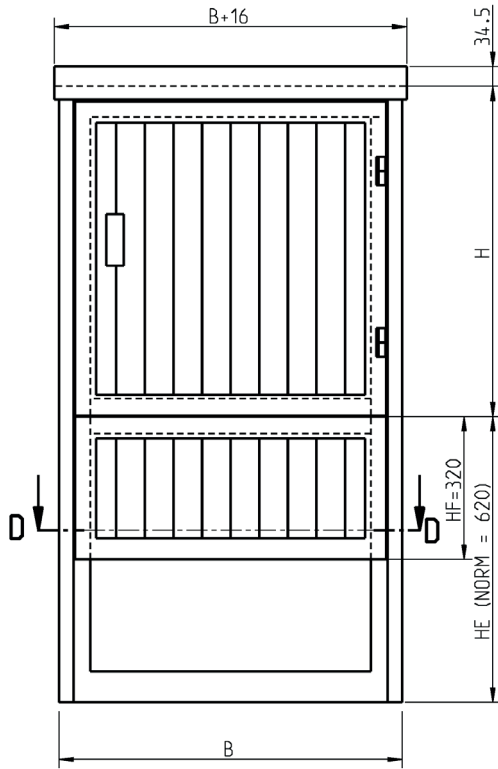
B Width between uprights
 H Height of uprights
 T Depth between uprights
 B1 Clear width
 B2 max. installation width
 B3 Roof width
 H1 Clear height

H2 Full height
 HE Height of ground section
 HF Height of front section
 T1 Clear depth
 T2 max. installation depth
 T3 Roof depth
 * Centre strut for front section

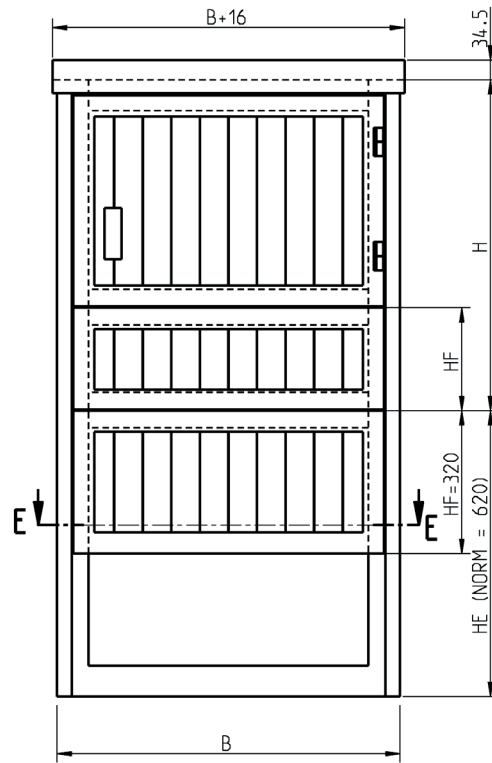
Ground enclosure, 1-leaf, with front section / two front sections

13

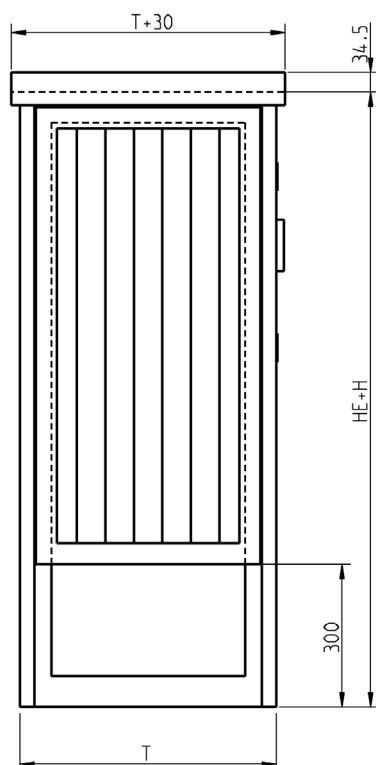
Front view (1 front section)



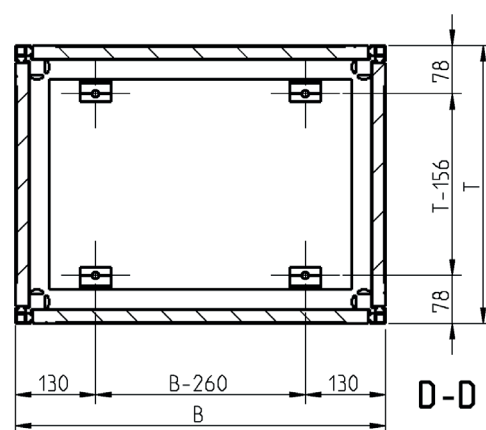
Front view (2 front sections)



Side view from left



Top view



- H = Height of uprights
- HE = Height of ground section
- HE+H = Full height
- HF = Height of front section

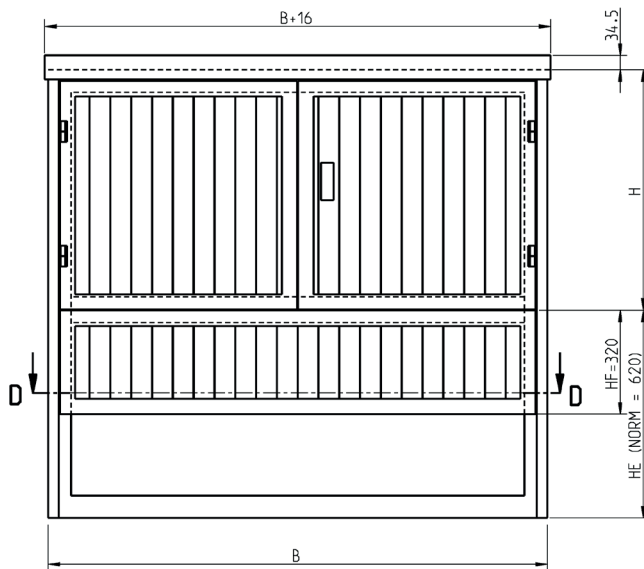
Optional:

- Two-part structure available
- 4 x CrNi brackets

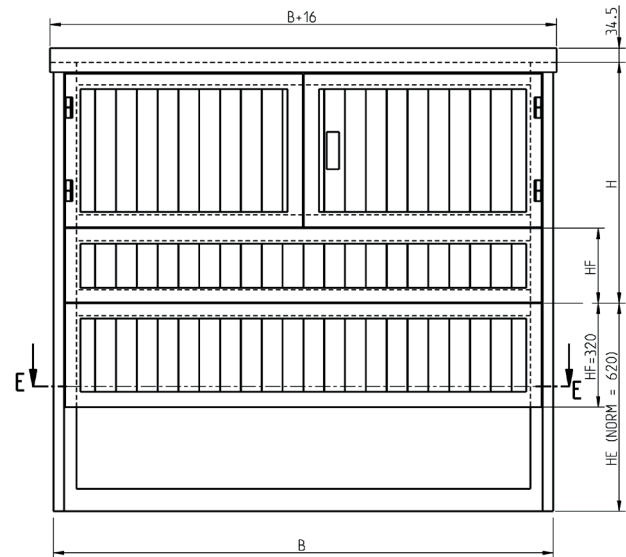
Ground enclosure, 2-leaf, with front section / two front sections

14

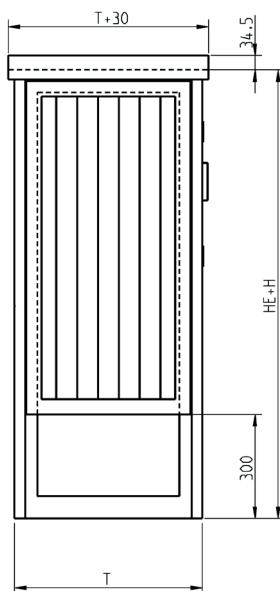
Front view (1 front section)



Front view (2 front sections)

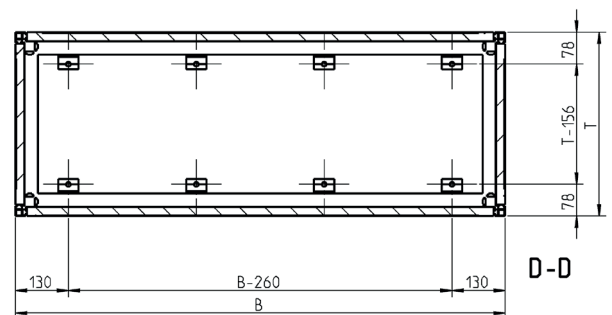


Side view from left



H = Height of uprights
 HE = Height of ground section
 HE+H = Full height
 HF = Height of front section

Top view



Number of floor fixing brackets:

B <	1000	4 units
B ≥	1000	6 units
B ≥	1600	8 units
B >	2000	10 units

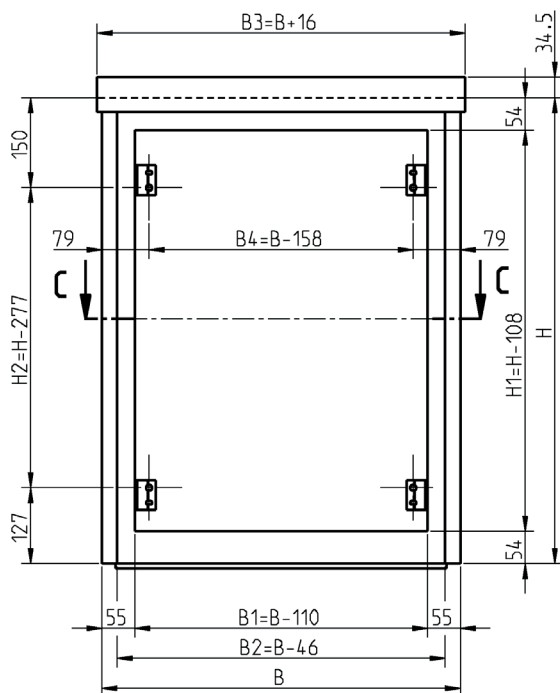
Optional:

- Two-part structure available
- 4 x CrNi brackets

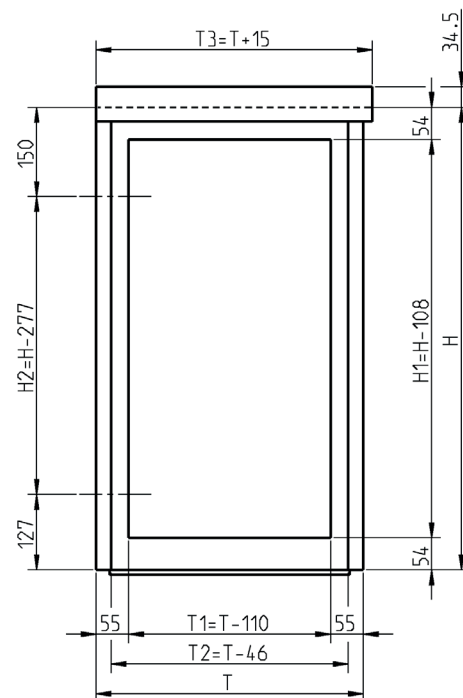
Wall/mast-mounted enclosure, assembly dimensions for integration of fixing rails

15

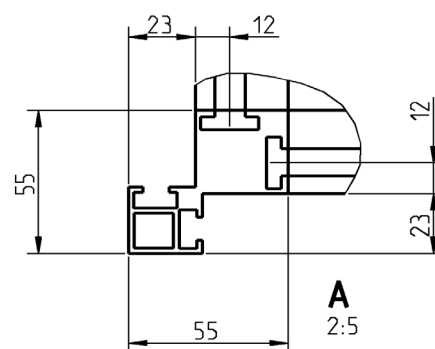
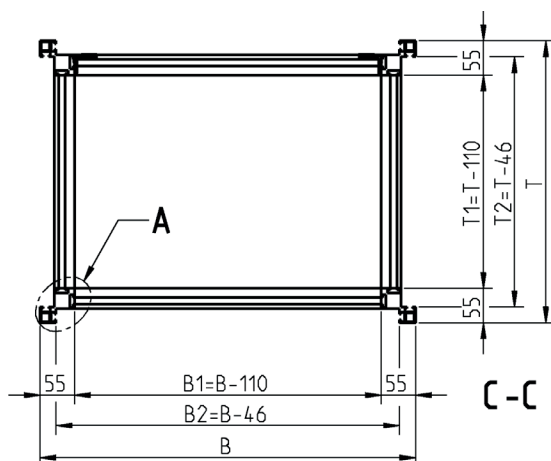
Front view



Side view from left



Top view



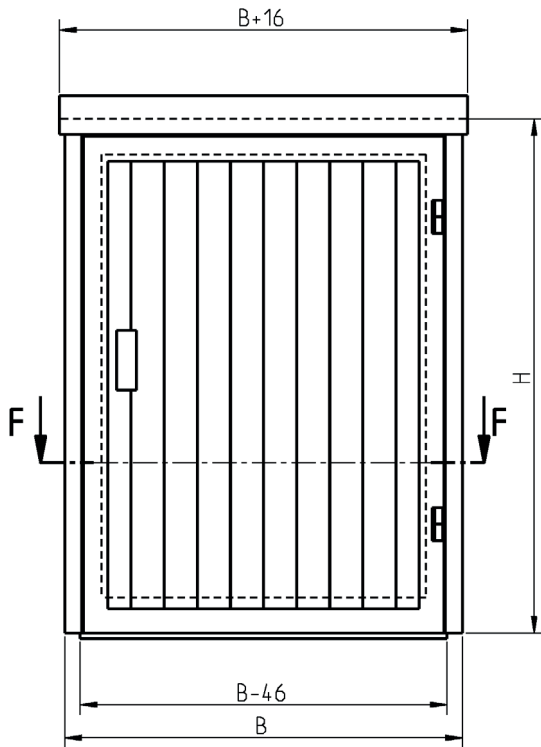
B Width between uprights
 H Height of uprights
 T Depth between uprights
 B1 Clear width
 B2 max. installation width
 B3 Roof width

B4 wall fixing, distance in width
 H1 Clear height
 H2 Wall fixing, distance in height
 T1 Clear depth
 T2 max. installation depth
 T3 Roof depth

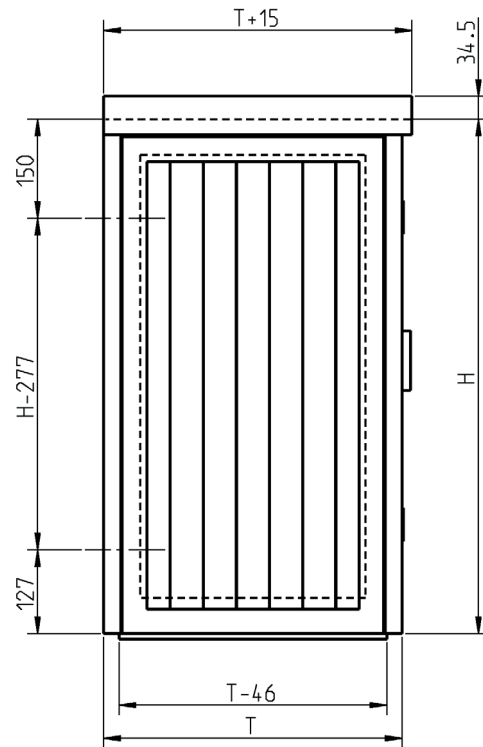
Wall/mast-mounted enclosure, 1-leaf, sealed base

16

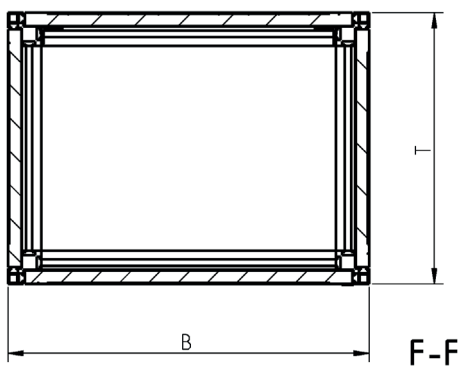
Front view



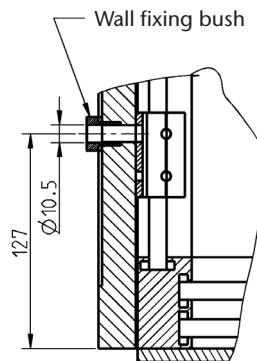
Side view from left



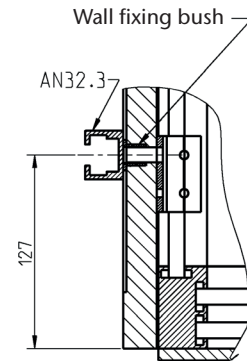
Top view



Wall enclosure with bush



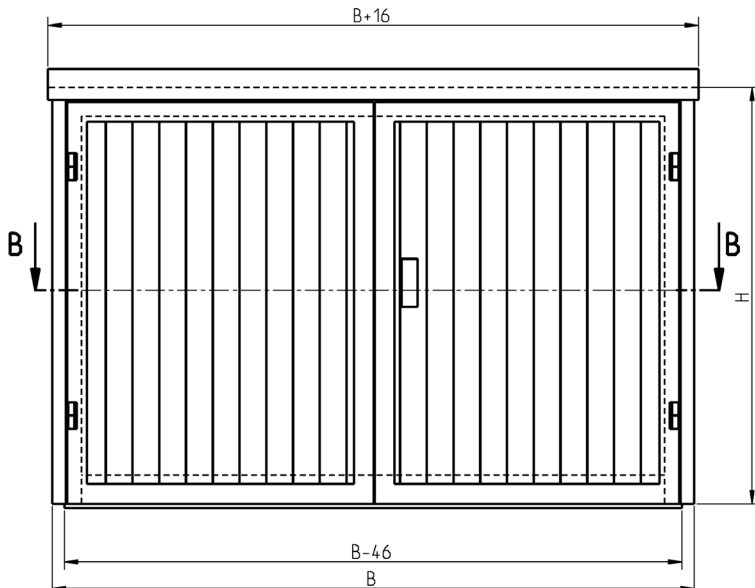
Mast-mounted enclosure with AN 32.3



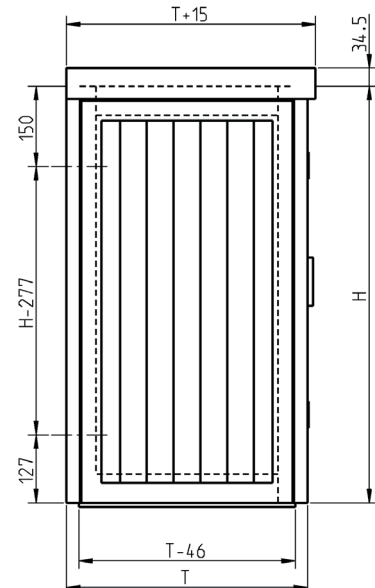
Wall/mast-mounted enclosure, 2-leaf, sealed base

17

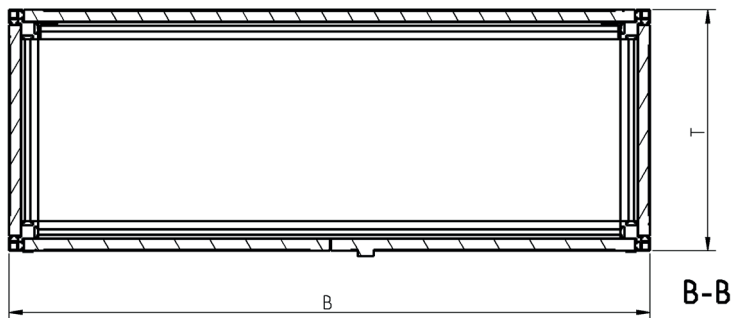
Front view



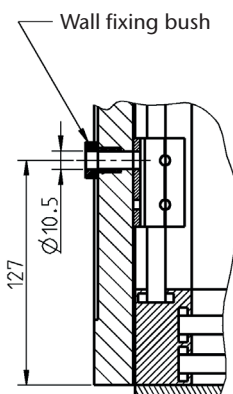
Side view from left



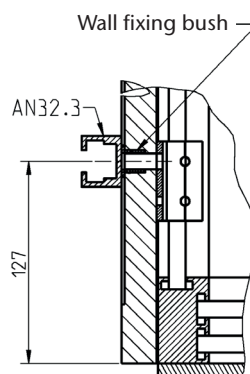
Top view



Wall enclosure with bush



Mast-mounted enclosure with AN 32.3



www.almatec.com

Almatec AG
Industriestrasse 12,
6170 Schüpfheim, Switzerland
Phone +41 41 485 77-77, Fax -88
info@almatec.com

Almatec SA
Ruelle de la Mottaz 7,
1071 Chexbres, Switzerland
Phone +41 21 946 03-00, Fax -03
info@almatec.com

Almatec GmbH
Im Löchel 2,
35423 Lich-Eberstadt, Germany
Phone +49 6004 808-0, Fax -149
service@almatec.com

