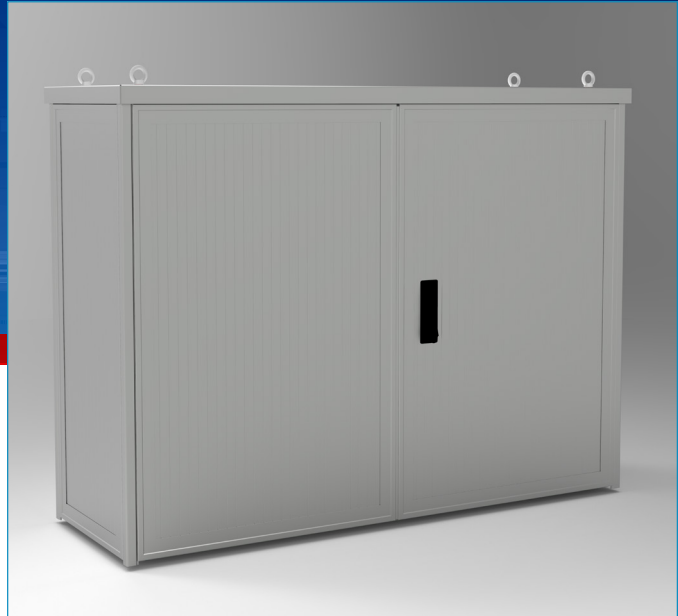


ASK ENCLOSURE LS1

Dimensions: H 1100 x W 1500 x T 500mm (Art. no. 017506)

External dimensions (including roof): H 1135 x W 1516 x D 530mm

**Our premium enclosures
at an attractive price
and available off the shelf**



Construction:

- Strong, distortion-proof profile technology
- Double-walled design, manufactured from hollow aluminium profiles
- Passive heat dissipation provided by natural convection
- Integral, all-round slide planes

Protection level:

- IP 55 according to EN 60529
- IK 10 according to EN 62208
- Shock, transportation and vibration to ETS EN 300-01
- Earthquake tested to ETS EN 300-019-2-4

Surface finish:

- Textured powder coating

Certification:

- EN 62208, approved for the specialist mounting of switchgear assemblies to EN 61439-1
- RoHS / REACH / WEEE compliant

Design:

- Dimensions: H 1100 x W 1500 x D 500mm
- Dimensions incl. roof: H 1135mm x W 1516 x D 530mm
- Colour: RAL 7035
- 2-leaf doors and concealed hinges with 180° opening angles
- Locked using a 3-point bar lock and swivelling lever handle, ready for locking cylinders
- Door stop for each door
- Double-walled roof construction
- Ready-mounted crane lugs, safety screws enclosed
- 2-part steel galvanized mounting plate, 2.5mm, stackable
- 2-part floor plate (front/back separation)
- Includes mounting brackets, ready for floor mounting

[For additional technical data, please see online data](#)

Suitable underground pre-cast concrete base, Art. no.: 017325

Comprehensive range of mechanical and electrical accessories available

Almatec AG
Industriestrasse 12,
6170 Schüpfheim, Switzerland
Phone +41 41 485 77-77, Fax -88
info@almatec.com

Almatec SA
Ruelle de la Mottaz 7,
1071 Chexbres, Switzerland
Phone +41 21 946 03-00, Fax -03
info@almatec.com

Almatec GmbH
Im Löchel 2,
35423 Lich-Eberstadt, Germany
Phone +49 6004 808-0, Fax -149
service@almatec.com

www.almatec.com

